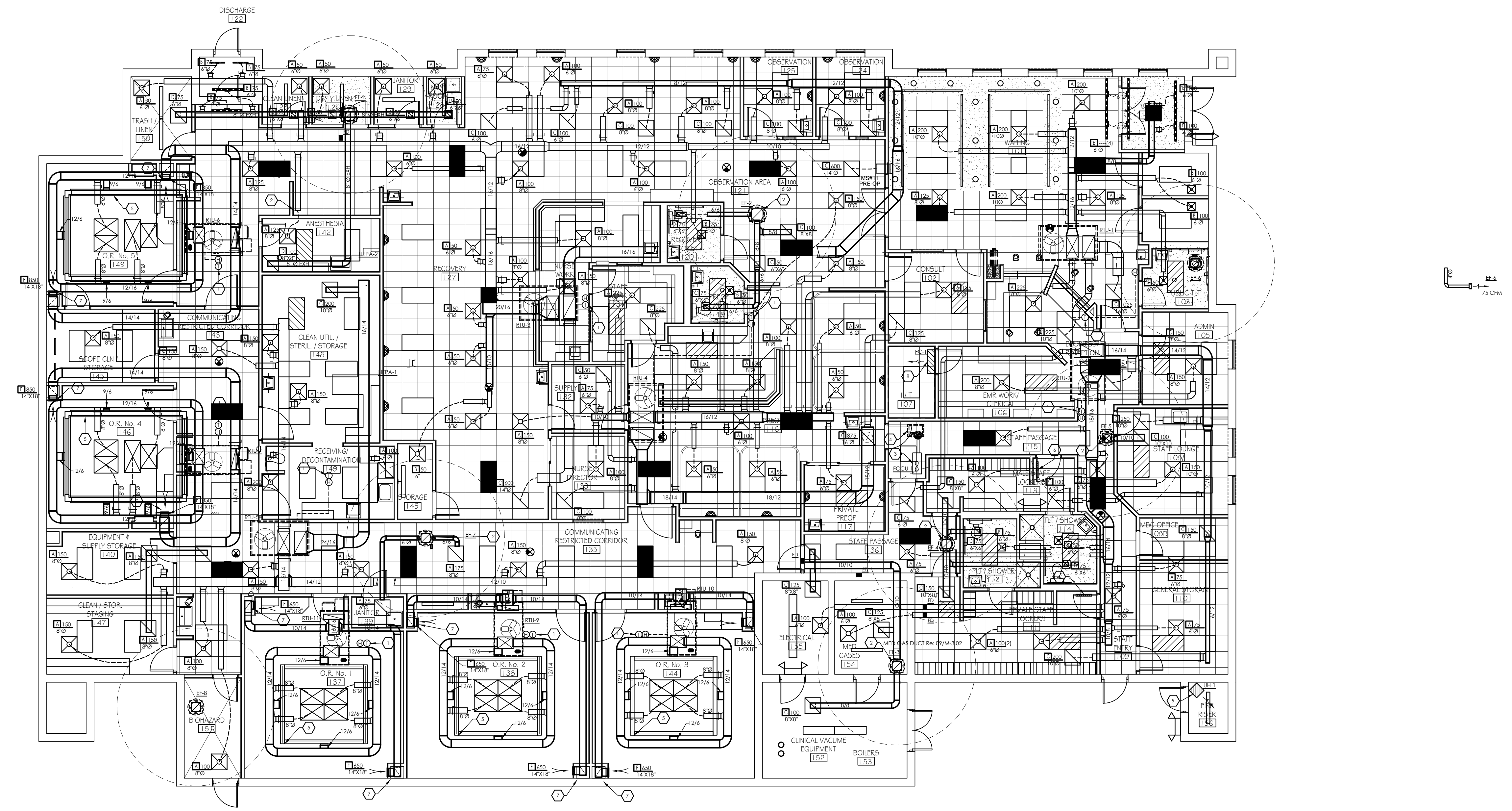


No.	Date	Revisions	App.
			RAS



- KEYED NOTES: MECHANICAL**
- 1. CONTROLS FOR A/C UNIT WILL BE BY MEANS OF A 24 VOLT 7 DAY PROGRAMMABLE THERMOSTAT WITH HEAT OFF, COOL, AND FAN ON AUTO CAPABLES BE SHOWN ON A DIGITAL DISPLAY MOUNT THERMOSTAT AT AIR ABOVE FINISHED FLOOR. PROVIDE WITH NEUTRAL CLEAR PLEXIGLASS COVER. PROVIDE W/ WALL MOUNTED THERMOSTAT/STAT/CONTROL BOARD.
 - 2. EXHAUST DUCT UP TO ROOF MOUNTED EXHAUST FAN.
 - 3. ROUTE REFRIGERANT LINES AND CONDENSER ELECTRICAL CONDUIT BELOW ROOF VIA "ROOF PENETRATION HOUSING" EQUAL TO "SMALL RIMP" FROM WOODPENTRATIONS.COM ROUTE REFRIGERANT LINES TO RESPECTIVE AIR HANDLER, ANCHOR LINES TO STRUCTURE AND SEAL ALL PENETRATIONS WATER TIGHT.
 - 4. PROVIDE NEW ROOF CURB FOR CONDENSING UNIT. REFER TO ARCHITECTURAL DETAIL DOCUMENT FOR CURB TYPE & FINISHING. MECHANICALLY FASTENMENT TO CURB. USE 1/4" WIDE STAINLESS STEEL STRAPPING. MINIMUM 3/8" GROUND THICKNESS. USE ALL STAINLESS STEEL FASTENERS. PROVIDE W/ 1/4" NEOPRENE PAD BETWEEN STRAP & UNIT (WHERE STRAP HOLDS UNIT DOWN ON TOP SURFACES OF UNIT).
 - 5. OPERATING ROOM TYPE AIR DISTRIBUTION SYSTEM TO HAVE CONTINUOUS PLENUM SLIT DIFFUSERS AND/OR OPERATING TABLE TO CREATE AN AIR CURTAIN & LAMINAR FLOW DIFFUSERS LOCATED OVER THE OPERATING TABLE WORK AREA TO BE DESIGNED BY THE CONTRACTOR. PROVIDE W/ AIR QUANTITY SPECIFIED IN SPECIFICATIONS FOR UNIT SERVING OPERATING ROOM. USE SURFACE MOUNTED APPLICATIONS. EQUAL TO "ROOF" SYSTEMS REFER TO MANUFACTURER'S INSTRUCTIONS/SUGGESTIONS FOR INSTALLATION. INTEGRATE MOVABLE/ADJUSTABLE O.R. LIGHTING SYSTEM WHERE POSSIBLE. COORDINATE W/ ELECTRICAL.
 - 6. PROVIDE W/ HEAVY DUTY BIGHT PROOF AIR TRANSFER GRILLE SIZED AT 18"x12" EXH. TO "PRICE MODEL 'ATGY' MOUNT AT 6" FROM BOTTOM OF DOOR.
 - 7. RETURN AIR TO BE ROUTED DOWN TO RETURN AIR GRILLE (TYPE AS INDICATED THAT IS INDICATED MORE THAN 12" F.P. AS PER REGULATORY BUREAU CENTER).
 - 8. PROVIDE W/ HEAVY DUTY BRIGHT PROOF AIR TRANSFER GRILLE SIZED AT 18"x12" EXH. TO "PRICE MODEL 'ATGY' MOUNT AT 6" FROM BOTTOM OF DOOR.
 - 9. SUSPEND VIA 1/4" ALL THREAD ROD AND PROVIDE WITH SPRING VIBRATION ISOLATORS IN NEOPRENE SPRING CURB.
 - 10. RETURN AIR TO BE ROUTED DOWN TO RETURN AIR GRILLE (TYPE AS INDICATED THAT IS INDICATED MORE THAN 12" F.P. AS PER REGULATORY BUREAU CENTER).
 - 11. PROVIDE W/ HEAVY DUTY BRIGHT PROOF AIR TRANSFER GRILLE SIZED AT 18"x12" EXH. TO "PRICE MODEL 'ATGY' MOUNT AT 6" FROM BOTTOM OF DOOR.
 - 12. MOUNT AIR CONDITIONING UNIT CENTERED ABOVE DOOR. REFER TO PLUMBING PAGES FOR CONDENSATE ROUTING.

MECHANICAL FLOOR PLAN

**PASEO SURGERY CENTER
 2471 HUDSON BOULEVARD
 BROWNSVILLE, TEXAS 78526**

ENGINEERING BY:
QUEST ENGINEERING
 304 North Main Street #1
 Conroe, Texas 77301
 Phone: (713) 252-3729
 rsaikowski@consolidated.net
 © Ronald A Saikowski PE LEEP AP 2014
 TEXAS REGISTRATION NO. FOR ENGINEERING FIRM IS F-10574



I, RON A. SAIKOWSKI, P.E., AUTHORIZED THE PLACEMENT OF THIS SEAL ON THIS DRAWING FOR THE PURPOSE OF ISSUING THIS DOCUMENT AS SPECIFIED BELOW

Not For Construction
For Background Use Only
Preliminary
For Concept Approval
Preliminary Bid Set
For Preliminary Approval
Check Set
Permit
For Final Approval
For Construction

4/26/16

NOTE:
 CONSTRUCTION SHALL NOT PROCEED UNTIL CONTRACTOR HAS OBTAINED ALL PERMITS AND INCORPORATED COMMENTS FROM TEXAS ACCESSIBILITY STANDARDS REVIEW AND PERMITTING ENTITIES IN WORK.

MECHANICAL FLOOR PLAN

1/8"=1'-0"